



SPRINGFIELD MARINE COMPANY

SEATING CATALOG



THE INDUSTRY'S LEADING EXPERTS IN FRESHWATER AND SALTWATER MARINE SEATING

© Springfield Marine 2020

ABOUT SPRINGFIELD MARINE

Springfield Aluminum Company was founded in 1952 by Garnett Carnahan as an aluminum foundry and quickly found itself in a new emerging marine market that developed across the USA. By the late 1970's, the marine industry was the primary customer base that allowed SPRINGFIELD MARINE to develop as a brand of marine seating hardware. SPRINGFIELD MARINE has pioneered the marine seating industry with innovative designs that have allowed numerous patents and design acknowledgments that still hold the brand strong today. SPRINGFIELD MARINE continues to develop products to meet the growing needs of the marine industry while maintaining durability for safety, stability, and comfort.

SPRINGFIELD MARINE COMPANY has been doing business in China since 1990. Our state of the art facility in Jiangsu offers nearly 70,000 m² of in-house product designs and manufacturing, molding, and logistic services. To ensure quality and customer satisfaction, we have continuously obtained the following authentications:

- Certificate of type approval of China Classification Society (CCS)
- DNV Business Assurance Management System Certificate (DNV)
- Type Approval Certificate (BV)
- EC Type-Examination Certificate
- ABYC H-31 Classifications (USA)

Our goal is to establish long term relationships to help grow and increase your market shares, as well as provide top of the line products that offer the comfort and safety your customers demand.

WARRANTY INFORMATION



HARDWARE: 5 Year Limited Warranty: Hardware (Pedestals, Mounts & Accessories)

For a period of 5 years from the date of sale to the first use purchaser, SPRINGFIELD MARINE CO. will repair or replace, at our discretion, any product which proves to have manufacturer's defect in materials and workmanship under normal and proper usage.



SEATING: 1 Year Limited Warranty: Upholstery & Cushions.

(Upholstery & cushions) For a period of 1 year from the date of sale to the first use purchaser, SPRINGFIELD MARINE CO. will repair or replace, at our discretion, any upholstered product which proves to have manufacturer's defect involving vinyl, fabric, leather or foam components in materials and workmanship under normal and proper usage.



SEATING: 5 Year Limited Warranty: Frame & Substrate.

(Frame & substrate) For a period of 5 years from the date of sale to the first use purchaser, SPRINGFIELD MARINE CO. will repair or replace, at our discretion, any seating product which proves to have manufacturer's defect involving frame or substrate components in materials and workmanship under normal and proper usage.

THIS WARRANTY DOES NOT EXTEND TO CONSEQUENTIAL DAMAGES. (Some states do not allow the exclusion or limitation of incidental or consequential damages, so the above limitation or exclusion may not apply to you.)

The foregoing is the only warranty or representation made, express or implied, and specifically there is NO WARRANTY OF MERCHANTABILITY and NO WARRANTY OF FITNESS FOR A PARTICULAR PURPOSE.

SPRINGFIELD MARINE CO. is not liable for improper installation or improper use of the product or any failure or problems from lack of reasonable maintenance, racing activities, or commercial applications.

THIS WARRANTY SHALL BE CONSIDERED VOID IF, The seat or any accessory/equipment has been altered, modified, changed or reworked, subjected to abuse, neglect, or accident, including abnormal use, the seat is installed in a manner that would subject the seat to abnormal use. THIS WARRANTY IS VOID IF MIXING SPRINGFIELD MARINE COMPONENTS WITH NON-SPRINGFIELD MARINE PARTS.

In order to obtain service under the warranty, the customer must notify our customer service department to obtain a return authorization. Phone: (417) 725-2667

PROPOSITION 65 CALIFORNIA



WARNING:

Cancer and reproductive harm
— www.p65warnings.ca.gov



AVERTISSEMENT:

Cancer et torts pour la reproduction
— www.p65warnings.ca.gov

SPRINGFIELD MARINE CO.
Attn: Returns (Your RA#)
1093 N. Cynthia Drive
Nixa, MO 65714

Our dealers and distributors are not authorized to modify the warranty in any respect.

SPRINGFIELD MARINE's continuing program of product development and improvement makes specifications, colors, standard features, designs, prices and availability subject to change without notice or obligation. See your Springfield Marine dealer for current information.

These products are not designed or warranted for racing or high performance use.

NOTE: COMMERCIAL USE RESTRICTIONS APPLY, CONTACT US FOR DETAILS.

Customers are responsible for paying return freight as well as the freight on a new order if you are making an exchange. Springfield Marine is not responsible for lost items in return shipping so please insure your package.

Seating

ABOUT SEATING

Springfield Marine knows that comfort is important in marine seating. Whether behind the wheel for long passages in rough water, dropping a line in a quiet creek, or anywhere in between. Springfield Marine offers a wide range of configurations and options.

Quality, comfort, and strength add up to value, and value is an important consideration in choosing the best seating system that's right for you. Our wide variety of chairs and even greater choice of seating hardware provide an array of combinations second to none.

Matching the chair with the correct seating hardware is also an important consideration in product selection. So whether selecting one of our seating packages or making your own combinations, Springfield Marine offers the right product to meet a wide range of needs.

Custom Seating and Upholstry available upon request for OEM production.

FOLDING SEATS • STAND-UP SEATS • MOLDED SEATS • UPHOLSTERED SEATS • HELM SEATS



Seating

FISH PRO 1

B

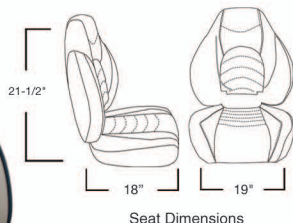


IMAGE	PART NUMBER	DESCRIPTION	PACK QUANTITY
A.	1041606-1	FISH PRO 1, SEAT - WHITE	1 PACK
B.	1041631-1	FISH PRO 1, SEAT - GRAY/BLUE	1 PACK
C.	1041634-1	FISH PRO 1, SEAT - CHAR/GRAY	1 PACK
D.	1041684-1	FISH PRO 1, SEAT - CHAR/TAN	1 PACK

Premium upholstery and cushions are designed to provide maximum comfort and quality. Backrest is fitted with ergonomically molded cushions and extended sides for extra support. Durable injection molded shell with Pivot Point allows seat to fold down flat.

- Weather resistant marine grade vinyl
- Universal mounting pattern 5"x12"
- Grandeur Vinyl
- Molded in seat grab inserts
- Channel for optional armrests

A



C



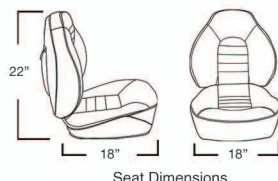
D



Folded Position

FISH PRO 1 MID BACK

A



B



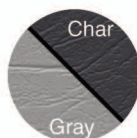
IMAGE	PART NUMBER	DESCRIPTION	PACK QUANTITY
A.	1041636	FISH PRO MID BACK, FOLDING SEAT - WHITE	1 PACK
B.	1041733	FISH PRO MID BACK, FOLDING SEAT - CHARCOAL & GRAY	1 PACK

Contour lumbar cushion cradles your back for maximum support. Designed for style, comfort, and durability. Deep mesh pocket on back of seat.

- Folds down easily
- Concealed pinch proof Pivot Point
- Weather resistant marine grade vinyl
- Universal mounting pattern: 5" x 5" & 5" x 12"
- Grandeur vinyl



White



Char
Gray



Folded Position

SUBSTRATE & FOAM FISH PRO 1



OEM IMAGE	PART NUMBER	DESCRIPTION	PACK QUANTITY
A.	1041600-SF1	FISH PRO 1 - SUBSTRATE & FOAM	1 PACK

Plastic injected substrate with support ribbing and metal inserts for support.

- Molded in T-nuts
- Molded Foam
- Center Pivot Point
- Channel for optional armrests



BACK



BOTTOM

FISH PRO II

HIGH BACK



IMAGE	PART NUMBER	DESCRIPTION	PACK QUANTITY
A.	1041419	FISH PRO II HIGH-BACK - NAVY & GRAY	1 PACK
B.	1041483	FISH PRO II HIGH-BACK - CHAR & GRAY	1 PACK
C.	1080013-G	OPTIONAL ARMREST	1 PACK

Premium upholstery and cushions are designed to provide maximum comfort and quality. Backrest is fitted with ergonomically molded cushions and extended sides for extra support. Durable injection molded shell with pivot point allows seat to fold down flat.

- High Back - Folds down easily
- Weather resistant marine grade vinyl
- Universal mounting pattern 5" x 12"
- Sorrento Vinyl
- Molded in seat grab inserts
- Channel for optional armrests



Folding Seats

FISH PRO II

LOW BACK



IMAGE	PART NUMBER	DESCRIPTION	PACK QUANTITY
A.	1041519	FISH PRO II, LOW-BACK - NAVY & GRAY	1 PACK
B.	1041583	FISH PRO II, LOW-BACK - CHAR & GRAY	1 PACK

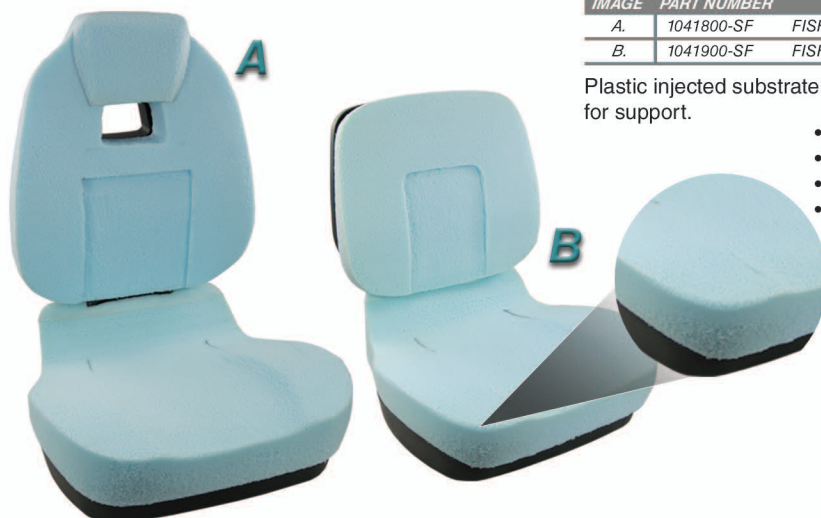
Premium upholstery and cushions are designed to provide maximum comfort and quality. Backrest is fitted with ergonomically molded cushions and extended sides for extra support. Durable injection molded shell with pivot point allows seat to fold down flat.

- Low Back - Folds down easily
- Weather resistant marine grade vinyl
- Universal mounting pattern 5" x 12"
- Sorrento Vinyl
- Molded in seat grab inserts
- Channel for optional armrests



SUBSTRATE & FOAM

FISH PRO II



OEM IMAGE	PART NUMBER	DESCRIPTION	PACK QUANTITY
A.	1041800-SF	FISH PRO II, HIGH-BACK - SUBSTRATE & FOAM	1 PACK
B.	1041900-SF	FISH PRO II, LOW-BACK - SUBSTRATE & FOAM	1 PACK

Plastic injected substrate with support ribbing and metal inserts for support.

- Molded in T-nuts
- Molded Foam
- Secondary plastic inserts for upholstery fasteners
- Channel for optional armrests



Seating

Folding Seats

SKIPPER PREMIUM HIGH BACK



IMAGE	PART NUMBER	DESCRIPTION	PACK QUANTITY
A.	1061063-B	SKIPPER PREMIUM HIGH BACK, FOLDING SEAT - CHAR/GRAY	1 PACK
B.	1061069-B	SKIPPER PREMIUM HIGH BACK, FOLDING SEAT - BLUE/GRAY	1 PACK

Contour Lumbar Cushion Cradles Your Back For Maximum Support. Designed For Style, Comfort And Durability. Folds Down Easily.

- Injected plastic frame
- Folds down easily
- T-nuts installed into seat for better mounting durability
- Universal Mounting Pattern: 5" x 5"
- Sorrento/Heritage Vinyl



Folded Position

SKIPPER PREMIUM LOW BACK



IMAGE	PART NUMBER	DESCRIPTION	PACK QUANTITY
A.	1061077-1	SKIPPER PREMIUM LOW BACK, FOLDING SEAT - GRAY/BLACK	1 PACK
B.	1061079-1	SKIPPER PREMIUM LOW BACK, FOLDING SEAT - GRAY/BLUE	1 PACK

Injection molded seats with interlocking hinge for greater structural support. Extra wide seat with high quality synthetic boat fabric for all day comfort.

- Black Plastic Frame
- Folds down easily
- T-nuts installed into seat for better mounting durability
- Universal Mounting Pattern: 5" x 5"
- Grandeur/Imperial Vinyl



Folded Position

SKIPPER DELUXE



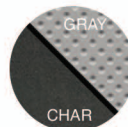
IMAGE	PART NUMBER	DESCRIPTION	PACK QUANTITY
A.	1061057	SKIPPER, GRAY SHELL W/ CHAR & GRAY CUSHIONS	1 PACK
B.	1061072	SKIPPER OEM DELUXE W/ CHAR & GRAY CUSHIONS	1 PACK

Injection molded seats with interlocking hinge for greater structural support. Extra wide seat with high quality synthetic boat fabric for all day comfort.

- Folds down easily
- Universal mounting pattern: 5"x5"
- T-nuts installed into seats for better mounting durability
- Snap on cushion



Folded Position



SKIPPER STANDARD



IMAGE	PART NUMBER	DESCRIPTION	PACK QUANTITY
A.	1061057	SKIPPER, WHITE SHELL W/ WHITE & BLUE CUSHIONS	1 PACK
B.	1061017	SKIPPER, GRAY SHELL W/ GRAY & CHAR CUSHIONS	1 PACK
C.	1061018	SKIPPER, GRAY SHELL W/ GRAY & RED CUSHIONS	1 PACK
D.	1061019	SKIPPER, GRAY SHELL W/ GRAY & BLUE CUSHIONS	1 PACK
E.	1061025	SKIPPER, WHITE SHELL W/ WHITE CUSHIONS	1 PACK

Injection molded seats with interlocking hinge for greater structural support. Extra wide seat with high quality upholstery for all day comfort.

- 5" x 5" & 5" x 12" Bolt Pattern
- Snap on cushions



Folding Seats

SKIPPER CAMO



IMAGE	PART NUMBER	DESCRIPTION	PACK QUANTITY
A.	1061020	SKIPPER, BLACK SHELL W/ MOSSY OAK™ BREAK UP CUSHIONS	1 PACK
B.	1061017	SKIPPER, BLACK SHELL W/ MOSSY OAK™ DUCK BLIND CUSHIONS	1 PACK

Injection molded seats with interlocking hinge for greater structural support. Extra wide seat with premium high quality camouflage upholstery.

- 5" x 5" & 5" x 12" Bolt Pattern
- Black plastic shell



Folded Position

SKIPPER SHELLS



IMAGE	PART NUMBER	DESCRIPTION	PACK QUANTITY
A.	1061015-S	SKIPPER, FOLD DOWN SHELL - GRAY	1 PACK
B.	1061015-SB	SKIPPER, FOLD DOWN SHELL - BLACK	1 PACK
C.	1061015-SW	SKIPPER, FOLD DOWN SHELL - WHITE	1 PACK
A.	1061015-M	SKIPPER, FOLD DOWN SHELL - GRAY	10 PACK BULK
D.	1061015-MS	SKIPPER, FOLD DOWN SHELL - SAND	10 PACK BULK
B.	1061015-MB	SKIPPER, FOLD DOWN SHELL - BLACK	10 PACK BULK

Injection molded seats with interlocking hinge for greater structural support.

- 5" x 5" & 5" x 12" Bolt Pattern
- T-Nuts



Folded Position

Seating

Folding Seats

TRAVELER MULTI COLOR



IMAGE	PART NUMBER	DESCRIPTION	PACK QUANTITY
A.	1061121-C	TRAVELER, GRAY SHELL W/ BLUE & GRAY CUSHIONS	2 PACK
B.	1061123-C	TRAVELER, GRAY SHELL W/ CHAR & GRAY CUSHIONS	2 PACK
C.	1061115-C	TRAVELER, WHITE SHELL W/ BLUE CUSHIONS	2 PACK

Super strong copolymer frame with extra wide contoured seat and curved back.

- Durable strap holds seat closed when folded down
- Universal mounting pattern: 5.25" x 5.25"



TRAVELER STANDARD



IMAGE	PART NUMBER	DESCRIPTION	PACK QUANTITY
A.	1061100-C	TRAVELER, GRAY SHELL W/ GRAY CUSHIONS	2 PACK
B.	1061103-C	TRAVELER, BLACK SHELL W/ BLACK CUSHIONS	2 PACK
C.	1061104-C	TRAVELER, WHITE SHELL W/ WHITE CUSHIONS	2 PACK
D.	1061105-C	TRAVELER, GREEN SHELL W/ GREEN CUSHIONS	2 PACK
E.	1061112-C	TRAVELER, GRAY SHELL W/ BLUE CUSHIONS	2 PACK
F.	1061113-C	TRAVELER, GRAY SHELL W/ CHARCOAL CUSHIONS	2 PACK
G.	1061114-C	TRAVELER, GRAY SHELL W/ RED CUSHIONS	2 PACK



TRAVELER CAMO



IMAGE	PART NUMBER	DESCRIPTION	PACK QUANTITY
A.	1061106-C	TRAVELER, GREEN SHELL W/ MOSSY OAK™ BREAK-UP CUSHIONS	2 PACK
B.	1061107-C	TRAVELER, GREEN SHELL W/ MOSSY OAK™ DUCK BLIND CUSHIONS	2 PACK
C.	1061108-C	TRAVELER, BROWN SHELL W/ MOSSY OAK™ BREAK-UP CUSHIONS	2 PACK



TRAVELER SHELLS



IMAGE	PART NUMBER	DESCRIPTION	PACK QUANTITY
A.	1061100-S	TRAVELER, FOLD DOWN SHELL - GRAY	2 PACK
B.	1061103-S	TRAVELER, FOLD DOWN SHELL - BLACK	2 PACK
C.	1061104-S	TRAVELER, FOLD DOWN SHELL - WHITE	2 PACK
D.	1061105-S	TRAVELER, FOLD DOWN SHELL - GREEN	2 PACK

OEM FOLDING



IMAGE	PART NUMBER	DESCRIPTION	PACK QUANTITY
A.	1062583	OEM SERIES, FOLDING SEAT - CHARCOAL & TAN	1 PACK
B.	1062683	OEM MEDIUM SERIES, FOLDING SEAT - CHARCOAL & TAN	1 PACK

Premium high quality upholstery and cushions with rigid injection molded frame.

- Folds down easily
- Heavy-duty pinchless hinges
- Weather resistant marine grade vinyl
- Mounting Pattern 5x5 & 5x12



Heavy-Duty
Pinchless Hinge



Folded View

PREMIUM PINCHLESS



IMAGE	PART NUMBER	DESCRIPTION	PACK QUANTITY
A.	1062025-1	PREMIUM PINCHLESS SEAT - CHARCOAL & GRAY	1 PACK

Premium high quality upholstery and cushions with rigid injection molded frame.

- Folds down easily
- Heavy-duty pinchless hinges
- Weather resistant marine grade vinyl
- Mounting Pattern 5x5 & 5x12
- Double Stitch



Heavy-Duty
Pinchless Hinge



Folded View

SPORT FOLDING



IMAGE	PART NUMBER	DESCRIPTION	PACK QUANTITY
A.	1040513	SPORT FOLDING SEAT, BLUE & GRAY	1 PACK
B.	1040543	SPORT FOLDING SEAT, GRAY & CHAR	1 PACK

Premium high quality upholstery and cushions with rigid injection molded frame.

- Folds down easily
- Heavy-duty pinchless hinges
- Weather resistant marine grade vinyl
- Mounting Pattern 5x5 & 5x12
- Double Stitch



Heavy-Duty
Pinchless Hinge



Folded View

Seating

HIGH BACK MULTI COLOR

Folding Seats



IMAGE	PART NUMBER	DESCRIPTION	PACK QUANTITY
A.	1040661	HIGH BACK, ECONOMY FOLDING SEAT - GRAY & BLUE	1 PACK
B.	1040663	HIGH BACK, ECONOMY FOLDING SEAT - GRAY & CHARCOAL	1 PACK
C.	1040665	HIGH BACK, ECONOMY FOLDING SEAT - GRAY & RED	1 PACK
D.	1040667	HIGH BACK, ECONOMY FOLDING SEAT - WHITE & BLUE	1 PACK
E.	1040668	HIGH BACK, ECONOMY FOLDING SEAT - SAND & BROWN	1 PACK

- Folds down easily
- Weather resistant marine grade vinyl
- Pinchless hinges
- Universal mounting pattern: 5" x 5" & 5" x 12" Bolt Pattern



HIGH BACK STANDARD



IMAGE	PART NUMBER	DESCRIPTION	PACK QUANTITY
A.	1040649	HIGH BACK, ECONOMY FOLDING SEAT - WHITE	1 PACK
B.	1040643	HIGH BACK, ECONOMY FOLDING SEAT - GRAY	1 PACK

- Strap on back for secure seat fastening
- Folds down easily
- Weather resistant marine grade vinyl
- Pinchless hinges
- Universal mounting Pattern: 5" x 5" & 5" x 12" Bolt Pattern



HIGH BACK CAMO



IMAGE	PART NUMBER	DESCRIPTION	PACK QUANTITY
A.	1040647	HIGH BACK, FOLDING SEAT - MOSSY OAK™ DUCK BLIND	1 PACK
B.	1040646	HIGH BACK, FOLDING SEAT - MOSSY OAK™ BREAK-UP	1 PACK

- Strap on back for secure seat fastening
- Folds down easily
- Weather resistant marine grade vinyl
- Pinchless hinges
- Universal mounting pattern: 5" x 5" & 5" x 12" Bolt Pattern



PREMIUM WAVE



IMAGE	PART NUMBER	DESCRIPTION	PACK QUANTITY
A.	1062031	PREMIUM FOLDING - GRAY W/ BLUE & METEOR STRIPE	1 PACK
B.	1062034	PREMIUM FOLDING - GRAY W/ METEOR STRIPE	1 PACK

Premium high quality upholstery and cushions with rigid injection molded frame for maximum support and comfort. Durable strap with snap keeps seat closed when folded down. 5" x 5" & 5" x 12" Bolt Pattern.



ECONOMY MULTI COLOR



IMAGE	PART NUMBER	DESCRIPTION	PACK QUANTITY
A.	1040651	ECONOMY, FOLDING SEAT - GRAY & BLUE	1 PACK
B.	1040653	ECONOMY, FOLDING SEAT - GRAY & CHARCOAL	1 PACK
C.	1040655	ECONOMY, FOLDING SEAT - GRAY & RED	1 PACK

Comfortable cushioned seat to support your backside. Strap with snap to keep seat secure when folded down. Rigid injection molded frame.

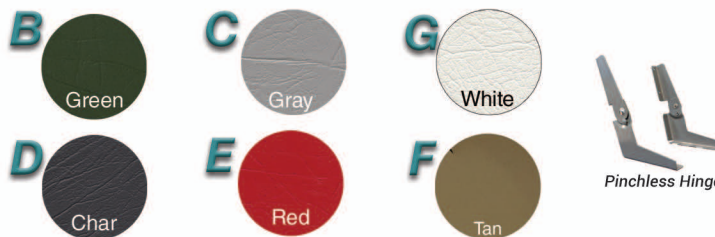
- Folds down easily
- Heavy-duty powder coated hinges
- Universal mounting pattern: 5" x 5"



ECONOMY STANDARD



IMAGE	PART NUMBER	DESCRIPTION	PACK QUANTITY
A.	1040621	ECONOMY, FOLDING SEAT - BLUE	1 PACK
B.	1040622	ECONOMY, FOLDING SEAT - GREEN	1 PACK
C.	1040623	ECONOMY, FOLDING SEAT - GRAY	1 PACK
D.	1040624	ECONOMY, FOLDING SEAT - CHARCOAL	1 PACK
E.	1040625	ECONOMY, FOLDING SEAT - RED	1 PACK
F.	1040628	ECONOMY, FOLDING SEAT - TAN	1 PACK
G.	1040629	ECONOMY, FOLDING SEAT - WHITE	1 PACK
H.	1040623-PDQ	FOUR PACK PDQ, FOLDING SEAT - GRAY	4 PACK
I.	1040629-PDQ	FOUR PACK PDQ, FOLDING SEAT - WHITE	4 PACK



ECONOMY CAMO



IMAGE	PART NUMBER	DESCRIPTION	PACK QUANTITY
A.	1040626	ECONOMY CAMO, FOLDING SEAT - MOSSY OAK™ BREAK-UP	1 PACK
B.	1040627	ECONOMY CAMO, FOLDING SEAT - MOSSY OAK™ DUCK BLIND	1 PACK

Comfortable cushioned seat to support your backside. Strap with snap to keep seat secure when folded down. Rigid injection molded frame.

- Folds down easily
- Black e-coated hinges
- Universal mounting pattern: 5" x 5"



Seating

XXL FOLDING SEAT

Folding Seats



IMAGE	PART NUMBER	DESCRIPTION	PACK QUANTITY
A.	1040691	XXL, FOLDING SEAT - GRAY & NAVY	1 PACK
B.	1040693	XXL, FOLDING SEAT - CHARCOAL & GRAY	1 PACK
C.	1040697	XXL, FOLDING SEAT - MOSSY OAK™ DUCK BLIND	1 PACK

Designed for the plus size body frames. Marine grade vinyl with plush foam padding. Heavy-duty powder coated hinges. Strap with snap to keep seat secure when folded down.

- Folds down easily
- Extra wide seat
- Heavy-duty pinchless hinges
- 5 x 5 Mount
- Strap on back for secure seat fastening



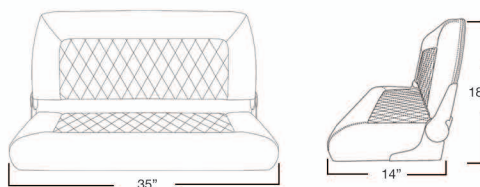
DOUBLE WIDE SEAT FOLDING



IMAGE	PART NUMBER	DESCRIPTION	PACK QUANTITY
A.	1042039	DOUBLE WIDE FOLDING SEAT - WHITE	1 PACK

Double Wide Seat. Marine grade vinyl with plush foam padding. Heavy-duty powder coated hinges.

- Folds down easily
- Heavy-duty pinchless hinges
- Quilted Stitch Pattern



Seat Dimensions



Heavy-Duty Pinchless Hinge

FOLDING SEAT PACKAGE



Rated ABYC Class H-31 B



Seat Dimensions



Rated ABYC Class H-31 AD



Seat Dimensions



IMAGE	PART NUMBER	DESCRIPTION	PACK QUANTITY
A.	1061100	TRAVELER CHAIR PACKAGE W/ CUSHIONS	1 PACK
B.	1001003	SKIPPER CHAIR PACKAGE W/ CUSHIONS	1 PACK

Traveler Chair Package Includes:

- Traveler fold down seat with cushions
- 15" fixed height pedestal with 9" floor base, anodized finish
- KingPin™ seat mount with e-coat finish and rotates 360°

Skipper Chair Package Includes:

- Skipper injection molded seat with cushions
- 15" fixed height pedestal with 9" floor base, anodized finish
- Locking Trac-Lock™ swivel, rotates 360°

Dimensions are from deck to top of pedestal, and may vary slightly. Dimensions are from deck to top of pedestal, and may vary slightly.



Traveler Folding Seat



KingPin™ Seat Mount (B)



Explorer Non-Locking Pedestal



Skipper Folding Seat



Trac-Lock™ Locking Swivel (AD)



Second Generation Locking Pedestal

DECK CHAIR PREMIUM



IMAGE	PART NUMBER	DESCRIPTION	PACK QUANTITY
A.	1080021-SS	DECK FOLDING CHAIR - STAINLESS STEEL TUBING	1 PACK
B.	1080125-CR	PREMIUM DECK CHAIR	1 PACK

Dual 1" stainless steel tubing, eight legged frame with rubber capped feet for extra stability. Folds down easily for transportation.

- Durable plastic substrate
- Stainless steel tubing
- Weather resistant marine grade vinyl



- Durable plastic substrate
- Aluminum Tubing
- Weather resistant marine grade vinyl
- Premium Padded Foam Armrest
- Cup Holder In Armrest
- Extra Thick Padding

DECK CHAIR CLASSIC



IMAGE	PART NUMBER	DESCRIPTION	PACK QUANTITY
A.	1080021	DECK FOLDING CHAIR - STANDARD	1 PACK
B.	1080021-EMB	DECK FOLDING CHAIR - EMBROIDERED SAIL FISH	1 PACK
C.	1080022	DECK FOLDING CHAIR - WITH GIMBAL	1 PACK
D.	1080021-DB	DECK FOLDING CHAIR - MOSSY OAK™ DUCK BLIND	1 PACK
E.	2100300	BOLT ON GIMBAL	1 PACK

Take these chairs wherever you go. Perfect for picnics, decks, docks or the action station for the fighting fisherman. Folds down easily for transportation.

- Durable plastic substrate
- Heavy-duty aluminum tubing
- Weather resistant marine grade vinyl
- Embroidered sail fish (EMB only)



Bolt on Gimbal 2100300
Fits Any Deck Chair (Available Separate)



DECK CHAIR



IMAGE	PART NUMBER	DESCRIPTION	PACK QUANTITY
A.	1080121	DECK FOLDING CHAIR - EUROPEAN STYLE	1 PACK
B.	1080120	HIGH BACK DECK FOLDING CHAIR - BLUE	1 PACK

Folds flat, locking bar keeps legs locked in place for extra stability. Can be used with or without cushions. Includes back and seat cushions.

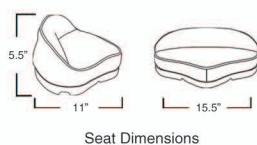
- Cushions are removable
- Weather resistant marine grade vinyl
- Plastic armrests
- Aluminum Frame



- Blue Canvas Cover
- Padded Head Rest and Leg Rest
- Wood Arm Rest
- Aluminum Frame

Seating

PRO-STAND UP



Seat Dimensions



A



B



C



D



E



F



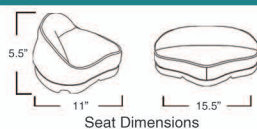
G

IMAGE	PART NUMBER	DESCRIPTION	PACK QUANTITY
A.	1040211	PRO STAND-UP SEAT - BLUE	1 PACK
B.	1040212	PRO STAND-UP SEAT - BLACK	1 PACK
C.	1040213	PRO STAND-UP SEAT - GRAY	1 PACK
D.	1040214	PRO STAND-UP SEAT - TAN	1 PACK
E.	1040215	PRO STAND-UP SEAT - RED	1 PACK
F.	1040216	PRO STAND-UP SEAT - WHITE	1 PACK
G.	1040217	PRO STAND-UP SEAT - MOSSY OAK™ DUCK BLIND	1 PACK

STAND UP



A



Seat Dimensions

IMAGE	PART NUMBER	DESCRIPTION	PACK QUANTITY
A.	1040213-NS	STAND-UP SEAT, ECONOMY - GRAY	1 PACK
B.	1040216-NS	STAND-UP SEAT, ECONOMY - WHITE	1 PACK
C.	1040212-NS	STAND-UP SEAT, ECONOMY - BLACK	1 PACK

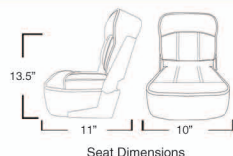


B



C

PREMIUM CASTING SEAT



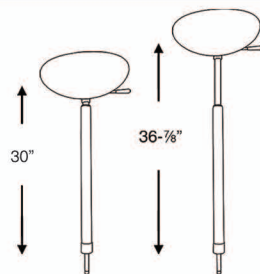
Seat Dimensions

IMAGE	PART NUMBER	DESCRIPTION	PACK QUANTITY
A.	1040230-01	PREMIUM CASTING SEAT - CHAR & GRAY	1 PACK

Folding Casting Seat Offers Support for your back and legs while fishing.

- Mount to any Stand up seat pedestal
- 5 x 5 Seat pattern
- Pinchless Hinge

CONTROL POST



30"

36-7/8"



Gray



Mica Tan



Spring-Lock™



Plug-In™



Taper-Lock™



KingPin™ Threaded



KingPin™ Standard

IMAGE	PART NUMBER	DESCRIPTION	PACK QUANTITY
A.	1040350-SL	SPRING-LOCK™ CONTROL POST, CHARCOAL GRAY SEAT	1 PACK
A.	1040351-SL	SPRING-LOCK™ CONTROL POST, MICA TAN SEAT	1 PACK
B.	1040351-PIC	PLUG-IN™ CONTROL POST, CHARCOAL GRAY SEAT	1 PACK
B.	1040352-PIM	PLUG-IN™ CONTROL POST, MICA TAN SEAT	1 PACK
C.	1040353-TLC	TAPER-LOCK™ CONTROL POST, CHARCOAL GRAY SEAT	1 PACK
C.	1040353-TLM	TAPER-LOCK™ UNIVERSAL PED-MICA	1 PACK
D.	1040355-KPC	KINGPIN™ CONTROL POST, CHARCOAL GRAY SEAT - THREADED	1 PACK
D.	1040355-KPM	KINGPIN™ CONTROL POST, MICA TAN SEAT - THREADED	1 PACK
E.	1040357-KPC	KINGPIN™ CONTROL POST, CHARCOAL GRAY SEAT - STANDARD	1 PACK
E.	1040357-KPM	KINGPIN™ CONTROL POST, MICA TAN SEAT - STANDARD	1 PACK



Rated ABYC Class H-31 B

FIRST MATE MOLDED



IMAGE	PART NUMBER	DESCRIPTION	PACK QUANTITY
A.	1061014-S	FIRST MATE, MOLDED SEAT - GRAY	6 PACK
B.	1061014-SG	FIRST MATE, MOLDED SEAT - GREEN	6 PACK

First Mate molded seats are one piece molded shells, made from PP plastic. Durable and lightweight, for years of carefree use.

- Durable plastic
- Universal mounting pattern: 5" x 5"
- Stack for retail presentation

ROTATIONAL MOLDED

One piece white molded shell, made from LLDPE plastic with UV inhibitors for years of carefree use. Available in a variety of shapes and styles.

For proper support use mounting plate #3100207 or any Trac-Lock™ slide (sold separately).

Seat cushions are available in off white for each seat style. Cushions are made from plush foam padding covered with marine grade vinyl. Designed with heat seal channels and quick dry construction. Cushions snaps easily to the seat.



MOLD #	#1	#2	#3	#4	#13	#16
1 PACK	NEW PORT	COMMODORE	YACHTSMAN II	SEAFARER	BLUEWATER	ADMIRAL
SEAT SHELL ONLY:	1060002-S	1060206-S	1060410-S	1060610-S	1061205-S	1061405-S
SEAT SHELL W/ CUSHION & MOUNTING PLATE:	1060004-C	1060204-C	1060407-C	1060605-C	1061201-C	-
SEAT SHELL W/ MOUNTING PLATE:	1060004	1060204	1060407	1060605	1061201	1061403
10 PACK OEM:	1060002-M	1060206-M	1060410-M	1060610-M	1061205-M	1061405-M
WHITE CUSHIONS:	1045014	1045020	1045028	1045014	1045035	1045036
DIMENSIONS:	18"Hx20"Wx16"D	19"Hx20"Wx16"D	17"Hx21.5"Wx16"D	17"Hx16"Wx14"D	19.5"Hx25"Wx17"D	17"Hx19"Wx16"D

Seating

NEWPORT PACKAGE

Molded Seats



IMAGE	PART NUMBER	DESCRIPTION	PACK QUANTITY
A.	1060100	NEWPORT ADJUSTABLE PACKAGE	1 PACK
B.	1060100-L	NEWPORT CHAIR PACKAGE, 15"PED W/ SLIDE LOCKING	1 PACK

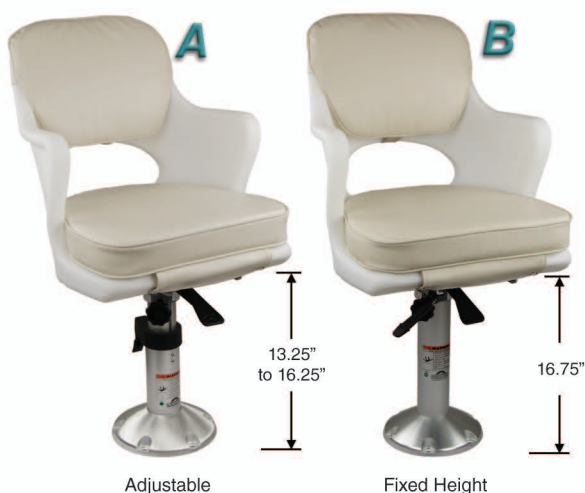
Package Includes:

- Newport molded seat with off white cushions
- 2-3/8" locking Trac-Lock™ swivel, rotates 360°
- Manual adjustable pedestal with 9" floor base, satin finish

Dimensions are from deck to top of swivel, and may vary slightly.



COMMODORE PACKAGE



Adjustable

Fixed Height

IMAGE	PART NUMBER	DESCRIPTION	PACK QUANTITY
A.	1000202	COMMODORE ADJUSTABLE PACKAGE	1 PACK
B.	1000205-L	COMMODORE FIXED HEIGHT PACKAGE	1 PACK

A. Package Includes:

- Commodore molded seat with off white cushions
- 2-3/8" locking Trac-Lock™ swivel, rotates 360°
- Manual adjustable pedestal with 9" floor base, satin finish
- Extends from 13" - 16"

B. Package Includes:

- Commodore molded seat with off white cushions
- 2-7/8" locking Trac-Lock™ slide & swivel, rotates 360°
- Slide travels 5-1/4" fore and aft
- 15" fixed height pedestal with 9" round floor base, anodized finish

Dimensions are from deck to top of swivel, and may vary slightly.



YACHTSMAN PACKAGE



IMAGE	PART NUMBER	DESCRIPTION	PACK QUANTITY
A.	1001414-L	YACHTSMAN FIXED HEIGHT PACKAGE	1 PACK

Package Includes:

- Yachtsman molded seat with off white cushions
- 2-7/8" locking Trac-Lock™ slide & swivel, rotates 360°
- Slide travels 5-1/4" fore and aft
- 15" fixed height pedestal with 9" round floor base, anodized finish



BLUEWATER PACKAGE



IMAGE	PART NUMBER	DESCRIPTION	PACK QUANTITY
A.	1001204-L	BLUEWATER ADJUSTABLE PACKAGE	1 PACK

A. Package Includes:

- Bluewater molded seat with off white cushions
- 2-3/8" locking Track-Lock™ air-ride slide & swivel, rotates 360°
- Slide travels 5-1/4" fore and aft
- Air-powered adjustable mainstay with 9" round base, anodized finish



Rated ABYC
Class H-31 AD

One of our largest molded seats! Cushions are made with plush foam padding covered in marine grade vinyl and snap easily onto seat. Designed for the plus size body frame

Dimensions are from deck to top of swivel, and may vary slightly.

Molded Seats

SEAFARER PACKAGE



IMAGE	PART NUMBER	DESCRIPTION	PACK QUANTITY
A.	1000605-L	SEAFARER FIXED HEIGHT PACKAGE	1 PACK

A. Package Includes:

- Seafarer molded seat with off white cushions
- 2-7/8" locking Trac-Lock™ swivel, rotates 360°
- 15" fixed height pedestal with 9" round base, anodized finish



Rated ABYC
Class H-31 AD

One of our smallest molded seats! Cushions are made with plush foam padding covered in marine grade vinyl and snap easily onto seat.

Dimensions are from deck to top of swivel, and may vary slightly.

ADMIRAL PACKAGE



IMAGE	PART NUMBER	DESCRIPTION	PACK QUANTITY
A.	1001408-L	ADMIRAL FIXED HEIGHT PACKAGE	1 PACK

A. Package Includes:

- Admiral molded seat (cushions sold separately)
- 2-7/8" locking Trac-Lock™ swivel, rotates 360°
- 15" fixed height pedestal with 9" round base, anodized finish



Rated ABYC
Class H-31 AD

Dimensions are from deck to top of swivel, and may vary slightly.

Seating

FLIP BACK SEAT

Upholstered Seats



Seat Dimensions

IMAGE	PART NUMBER	DESCRIPTION	PACK QUANTITY
A.	1042046	FLIP BACK SEAT - WHITE W/ SLIDE BENCH MOUNT	1 PACK
B.	1042047	FLIP BACK SEAT - WHITE W/O SLIDE	1 PACK

Conveniently flips in either direction for your boating needs. Can use two seats for side by side seating. Constructed with heavy-duty marine grade vinyl over plush foam padding.

- Back moves fore and aft
- Off white upholstery
- Weather resistant marine grade vinyl
- Universal mounting pattern: 5" x 12"

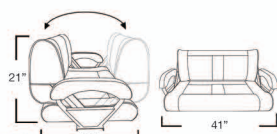


White



Back View

BENCH DOUBLE BUCKET



Seat Dimensions



IMAGE	PART NUMBER	DESCRIPTION	PACK QUANTITY
A.	1042050	DOUBLE BUCKET SEAT	1 PACK
A.	2100196	REPLACEMENT COVER	1 PACK

Bench seating for two. Unique flip back feature allows for fore and aft seating. Thick foam padding covered in marine grade vinyl over a high-strength composite substrate. Works with pedestal or box style mounting.

- Provides 35.5" of seating area
- Back moves fore and aft
- Off white upholstery

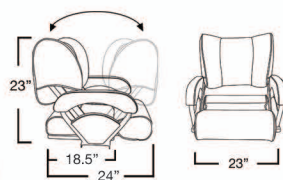


White



Back View

TWIN 46 FLIP-UP SEAT



Seat Dimensions



IMAGE	PART NUMBER	DESCRIPTION	PACK QUANTITY
A.	1043001	TWIN 46 FLIP-UP SEAT	1 PACK

Lots of versatility with this seat. A comfortable seat or flip-up bolster for leaning and standing position, or flip the chair back for the fore and aft position. Foam padding covered with weather resistant marine grade vinyl.

- Flip-up bolster
- Back moves fore and aft
- Off white upholstery
- Universal mounting pattern: 5" x 5"



White



Lean Position

DELUXE SPORT FLIP-UP



IMAGE	PART NUMBER	DESCRIPTION	PACK QUANTITY
A.	1043251	DELUXE SPORT FLIP-UP SEAT - NAVY & WHITE	1 PACK
B.	1043253	DELUXE SPORT FLIP-UP SEAT - CHARCOAL & WHITE	1 PACK
C.	1043259	DELUXE SPORT FLIP-UP SEAT - WHITE	1 PACK
D.	1043263	DELUXE SPORT FLIP-UP SEAT - CHARCOAL & GRAY	1 PACK

Comfort and support seat, flip-up bolster for standing or leaning positions. Blow molded frame, with molded foam. Premium high quality upholstery with marine grade vinyl.

- Flip-up bolster
- Light weight blow molded frame
- Weather resistant marine grade vinyl
- Universal mounting pattern: 5" x 12"
- Sorrento Vinyl



Molded Seats

DELUXE SPORT BUCKET



IMAGE	PART NUMBER	DESCRIPTION	PACK QUANTITY
A.	1043691	DELUXE SPORT SEAT - NAVY & WHITE	1 PACK
B.	1043693	DELUXE SPORT SEAT - CHARCOAL & WHITE	1 PACK
C.	1043699	DELUXE SPORT SEAT - WHITE	1 PACK

Premium upholstery and cushions are designed to provide maximum comfort and quality. Durable blow molded frame with ergonomically molded cushions and extended sides for extra support.

- Sorrento Vinyl
- Weather resistant marine grade vinyl
- Universal mounting pattern: 5" x 12"



SUBSTRATE & FOAM DELUXE SPORT



IMAGE	PART NUMBER	DESCRIPTION	PACK QUANTITY
A.	1043250-SFB	DELUXE SPORT FLIP-UP SEAT - SUB, FOAM, & BOLSTER ONLY	1 PACK
B.	1043250-SFB1	DELUXE SPORT FLIP-UP SEAT - SUB, FOAM, PARALLEL BOLSTER	1 PACK
C.	1043250-SF	DELUXE SPORT SEAT - SUB, FOAM	1 PACK

Premium upholstery and cushions are designed to provide maximum comfort and quality. Durable blow molded frame with ergonomically molded cushions and extended sides for extra support.

- Universal mounting pattern: 5" x 12"



BOTTOM OF
SUBSTRATE

Seating

Upholstered Seats

OZARK SPORT II



IMAGE	PART NUMBER	DESCRIPTION	PACK QUANTITY
A.	1043325	OZARK SPORT II, RED & BLACK	1 PACK
B.	1043334	OZARK SPORT II, WHITE & BLACK	1 PACK

The Ozark seat is available in a variety of options and styles, with premium high quality upholstery and cushions on a rigid aluminum frame for maximum support and comfort.

- Premium Upholstery
- Weather resistant marine grade vinyl
- Universal mounting pattern: 5" x 5" & 5" x 12"



OZARK SEATS

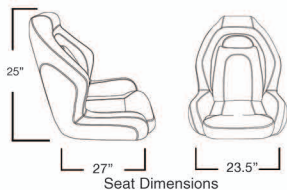


IMAGE	PART NUMBER	DESCRIPTION	PACK QUANTITY
A.	1003224	OZARK, 3-PIECE BENCH - CHARCOAL & METEOR GRAY	1 PACK
B.	1043224	OZARK, SEAT - CHARCOAL & METEOR GRAY	1 PACK
C.	1043224-B	OZARK, SEAT W/ BOLSTER - CHARCOAL & GRAY	1 PACK
D.	1043224-CS	OZARK, CENTER FOLDING SEAT - CHARCOAL & GRAY	1 PACK
E.	1040224	OZARK, CASTING SEAT - CHARCOAL & GRAY	1 PACK

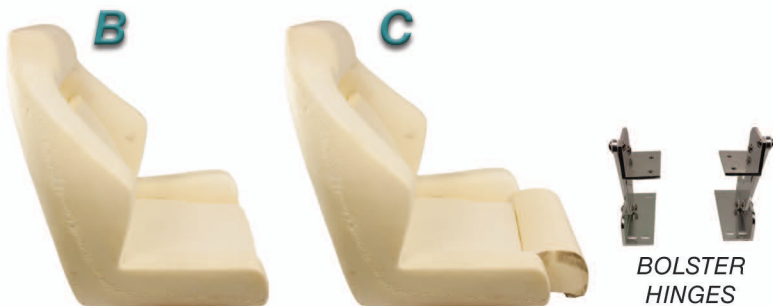
The Ozark seat is available in a variety of options and styles, with premium high quality upholstery and cushions on a rigid aluminum frame for maximum support and comfort.

- Premium Upholstery
- Weather resistant marine grade vinyl
- Universal mounting pattern: 5" x 5" & 5" x 12"

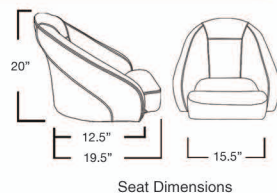


SUBSTRATE & FOAM

IMAGE	PART NUMBER	DESCRIPTION	PACK QUANTITY
A.	1043200-SFB	OZARK, SEAT - SUB, FOAM & BOLSTER	1 PACK
B.	1043200-SF	OZARK, SEAT - SUBSTRATE & FOAM	1 PACK
C.	1043200-SFB1	OZARK, SEAT - SUB, FOAM & BOLSTER PARALLEL	1 PACK



SPORT BUCKET SEAT

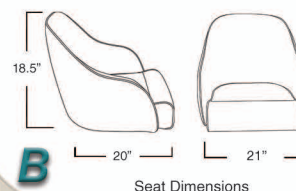


A

IMAGE	PART NUMBER	DESCRIPTION	PACK QUANTITY
A.	1043501	SPORT BUCKET FLIP-UP SEAT - WHITE	1 PACK
B.	1040407	DELUXE BUCKET SEAT - WHITE	1 PACK

Comfort and smooth riding on this seat. Plush foam padding covered in marine grade vinyl. Flip-up bolster converts easily from sit down to stand up leaning support. Rugged aluminum tubing bent and welded with molded foam.

- Flip-up bolster
- Heavy-duty aluminum frame
- Weather resistant marine grade vinyl
- Universal mounting pattern: 5" x 12"

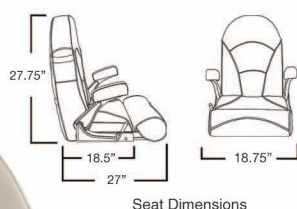


B



Lean Position

ROYAL SEAT



A

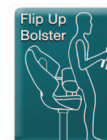
IMAGE	PART NUMBER	DESCRIPTION	PACK QUANTITY
A.	1040800	ROYAL FLIP-UP SEAT - WHITE	1 PACK
B.	1040800-NB	ROYAL SEAT - WHITE	1 PACK

Comfortable full size helm or captain's seat when flipped down. Flip-up the bolster for standing or leaning position. Armrest also flip-up and out of the way. Heavy-duty marine grade vinyl over plush foam padding.

- Flip-up bolster
- Large dry pocket on back of seat
- Weather resistant marine grade vinyl
- Use with short Cam-Lock, PN: 3100931 (sold separately)
- Mounting pattern: 5.25" x 9"
- Flip-Up Arm Rests
- Reclines 45 Degrees



B



Lean Position

STINGRAY SEAT



IMAGE	PART NUMBER	DESCRIPTION	PACK QUANTITY
A.	1040930-01	STINGRAY SPORT BUCKET FLIP-UP -BLACK & GRAY	1 PACK

Comfortable runabout seat or flip-up the bolster for standing or leaning position. Blow molded high-strength composite shell with high density foam padding covered in marine grade vinyl.

- Flip-up bolster
- Weather resistant marine grade vinyl
- Universal mounting pattern: 5" x 12"



Lean Position

OCEAN FLIP-UP SEAT



IMAGE	PART NUMBER	DESCRIPTION	PACK QUANTITY
A.	1040900	OCEAN FLIP-UP SEAT - WHITE	1 PACK

Comfortable runabout seat or flip-up the bolster for standing or leaning position. Blow molded high-strength composite shell with high density foam padding covered in marine grade vinyl.

- Flip-up bolster
- Large dry pocket on back of seat
- Weather resistant marine grade vinyl
- Universal mounting pattern: 5" x 12"



White



Flip-Up Bolster



Mesh Pocket

SUBSTRATE & FOAM

IMAGE	PART NUMBER	DESCRIPTION	SIZE	PACK QUANTITY
A.	1040925-SFB	VOYAGER SPORT FLIP-UP SUB AND FOAM	H: 26" x W: 22" x D: 24"	1 PACK
B.	1043425-SFB	CLUBMAN SPORT FLIP-UP SUB AND FOAM	H: 21" x W: 21" x D: 19"	1 PACK
C.	1043240-SFB	RECON SPORT FLIP-UP SUB AND FOAM	H: 21" x W: 19.5" x D: 22"	1 PACK

- Blow molded substrate with molded foam & Flip-up Bolster.



A



BOLSTER
HINGES



B



C

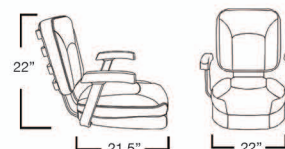
LADDER BACK SEATS



IMAGE	PART NUMBER	DESCRIPTION	PACK QUANTITY
A.	1061301	LADDER BACK SEAT - W/ WHITE CUSHIONS	1 PACK
B.	1061302	LADDER BACK SEAT - W/ WHITE CUSHIONS & GIMBAL	1 PACK
C.	1061311	LADDER BACK SEAT - W/O CUSHIONS	1 PACK

2 piece plastic injection seat covered with a UV-stabilized polypropylene substrate for durability. Molded armrests with polished aluminum brackets.

- Molded grab handle on back of seat
- Removable snap on cushions
- Universal mounting pattern: 5" x 12"



Seat Dimensions



LADDER BACK CHAIR PACKAGES



IMAGE	PART NUMBER	DESCRIPTION	PACK QUANTITY
A.	1001303	LADDER BACK CHAIR PACKAGE	1 PACK
B.	1001304	LADDER BACK CHAIR PACKAGE W/ GIMBAL	1 PACK

A. Package Includes:

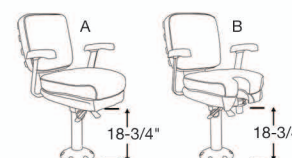
- 2 piece plastic injection seat with armrests and white cushions
- 2-7/8" Trac-Lock™ slide/swivel (locking) rotates 360° & travels 5-1/4" fore and aft
- 18" fixed height pedestal with 9" round base, anodized finish

B. Package Includes:

- 2 piece plastic injection seat with armrests, gimbal, and white cushions
- 2-7/8" Trac-Lock™ slide/swivel (locking) rotates 360° & travels 5-1/4" fore and aft
- 18" fixed height pedestal with 9" round base, anodized finish



Rated ABYC
Class H-31 AD



Dimensions are from top of deck to top of slide & swivel and may vary slightly

FOLD DOWN BENCH

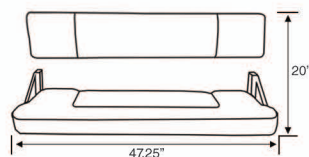
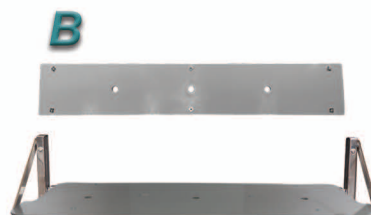


IMAGE	PART NUMBER	DESCRIPTION	PACK QUANTITY
A.	1081093	FOLD DOWN BENCH SEAT - WHITE & GRAY	1 PACK
B.	1081093-F	FOLD DOWN BENCH SEAT - FRAME ONLY	1 PACK

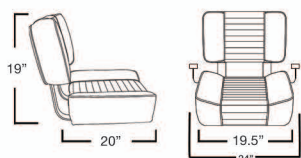
Simply lift back of seat and fold down for easy storage.

- Stainless Steel Frame
- Marine Grade Vinyl
- Foam Cushion



DELUXE UPHOLSTERED

Upholstered Seats



Seat Dimensions

IMAGE	PART NUMBER	DESCRIPTION	PACK QUANTITY
A.	1040809	DELUXE UPHOLSTERED SEAT - WHITE	1 PACK
B.	1040002	DELUXE CAPTAINS SEAT - SEAT W/ ARMRESTS ONLY - WHITE	1 PACK
C.	1040009	DELUXE CAPTAINS SEAT - SEAT W/ ARMRESTS ONLY - BLACK	1 PACK

Perfect for comfortably riding out rough conditions. High density foam cushions covered in marine grade vinyl for maximum comfort and durability.

- Anodized aluminum back support bars.
- (B.) Armrest supports and cushions
- Plastic durable substrate



A



B



C



Side View

DELUXE CHAIR STAND



A

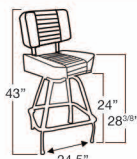


IMAGE	PART NUMBER	DESCRIPTION	PACK QUANTITY
A.	1020003	DELUXE CAPTAIN'S CHAIR PACKAGE - WHITE	1 PACK
B.	1020009	DELUXE CAPTAIN'S CHAIR PACKAGE - BLACK	1 PACK
C.	1080018	DELUXE CAPTAIN'S CHAIR STAND WITH SWIVEL	1 PACK

Seat rotates 360°. Chair stand has 1" anodized legs with rubber tip guards.

- Anodized aluminum arms and back support bars.
- Plastic durable substrate
- Bolt-on Gimbal



B



C

Deluxe Chair Stand with Swivel

BAR STOOLS



A



B

IMAGE	PART NUMBER	DESCRIPTION	PACK QUANTITY
A.	1081224-G	24" STAINLESS STEEL BAR STOOL PACKAGE	1 PACK
B.	1081224-GAL	24" ALUMINUM BAR STOOL PACKAGE	1 PACK
A.	1081230-G	30" STAINLESS STEEL BAR STOOL PACKAGE	1 PACK
B.	1081230-GAL	30" ALUMINUM BAR STOOL PACKAGE	1 PACK
C.	1081233	BAR STOOL SEAT - GRAY	1 PACK

Durable 15" round bar stool seat with thick plush cushion provides support and comfort. 2-7/8" pedestal, available in 316 mirror finish stainless steel or high strength aluminum.

- Stainless steel arched back support
- Chrome Trac-Lock™ swivel
- 14" Round stainless steel or aluminum footrest

Rated ABYC
Class H-31 AP



C

15" Round Bar Stool Seat

Seating

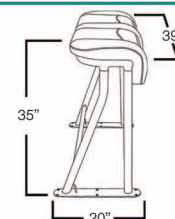
LEANING POST



IMAGE	PART NUMBER	DESCRIPTION	PACK QUANTITY
A.	1045070	SEAT CUSHIONS ONLY - WHITE	1 PACK
B.	1045075	BACKREST CUSHION ONLY - WHITE	1 PACK
C.	1080085	BACKREST WITH CUSHIONS AND FRAME - WHITE	1 PACK
D.	1080088	ROD HOLDER FRAME	1 PACK
E.	1080080	LEANING POST	1 PACK

High-strength aluminum bent and welded frame. Thick foam padding covered with marine grade vinyl. Leaning post packed in a box the size of cushion for shipping and storage.

- Easy assembly and installation
- Mounting hardware included
- Modular back rest and rod holder



Seat Cushion Only



Backrest Cushion Only



Leaning Post



Backrest w/ Cushion



Rod Holder Frame

COOLER SEAT



IMAGE	PART NUMBER	DESCRIPTION	PACK QUANTITY
A.	1042010	COOLER FLIP BACK SEAT - WHITE	1 PACK
B.	1042010-SF	COOLER FLIP BACK SEAT - NO UPHOLSTERY	1 PACK

Back rest conveniently flips in either direction. Thick foam padding covered in marine grade vinyl. Seat/Lid opens up to cooler keeping your drinks and food fresh all day.

- 72 quarts
- Aluminum rails with stainless steel hardware
- Dimensions: 37" H x 32" W x 18-1/2" D
- Seating height: 20-1/2" H



No Upholstery



Seat opens to cooler



Side View

DOCK BENCH



IMAGE	PART NUMBER	DESCRIPTION	PACK QUANTITY
A.	1099050-2	ALUMINUM DOCK BENCH	1 PACK
B.	1099050-2A	ALUMINUM DOCK BENCH - ARMRESTS	1 PACK

Strong anodized aluminum frame with extruded aluminum support legs.

- Easy to assemble
- Heavy duty design
- Weather resistant for harsh marine environment
- Packs neatly into box (19" W x 42" L x 5" D)
- H: 30" x W: 38.75" x D: 12"
- Anodized Aluminum



With Armrests

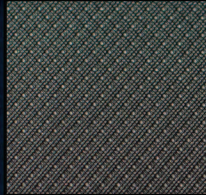


Side View

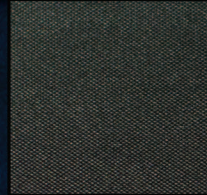


Front View

VINYL & FABRIC FAMILY COLLECTION



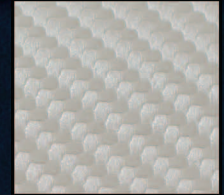
LEGACY - 197



SEDONA - 102



HERITAGE - 290



IMPERIAL - 215



GRANDEUR
219



BELLWETHER
041



SORRENTO
007



SORRENTO
PEARL - 007



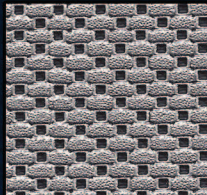
COACHMAN
447



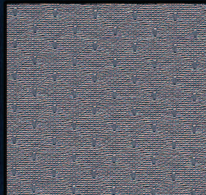
COACHMAN LX
122



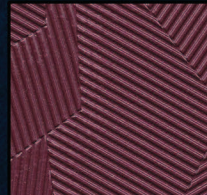
OPULENCE
186



REGAL - 160



ORNATE - 189



MOSAIC - 261



CLASSIC WEAVE
263



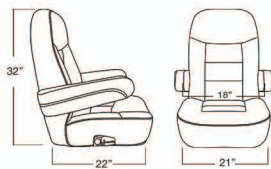
RATTAN - 264



SPRINGFIELD MARINE'S
VINYL & FABRIC COLLECTION

Seating

MARINER HELM



Seat Dimensions

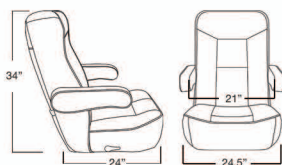
IMAGE	PART NUMBER	DESCRIPTION	PACK QUANTITY
A.	1042081-BC	MARINER HELM CHAIR - BLACK / CHARCOAL	1 PACK
B.	1042080-W	MARINER HELM CHAIR - WHITE	1 PACK
C.	1042080-B	MARINER HELM CHAIR - BLACK	1 PACK

Luxury helm seat with plush foam padding covered in marine grade vinyl and heavy-duty powder coated steel frame.

- Back reclines 45 degrees
- Armrests flip up - out of the way
- Universal mounting pattern: 5" x 12"



WHEELHOUSE HELM



Seat Dimensions

IMAGE	PART NUMBER	DESCRIPTION	PACK QUANTITY
A.	1042120-XLB1	WHEELHOUSE XL HELM SEAT - BLACK	1 PACK

Wheelhouse Helm seat offers a heavy-duty powder coated steel shock absorbing suspension seat frame with 9" thick foam cushions covered in marine grade vinyl.

- Back reclines 45 degrees
- Armrests flip up - out of the way
- Universal mounting pattern: 5" x 12"
- Adjustable Arm Rest
- Pocket on back of seat

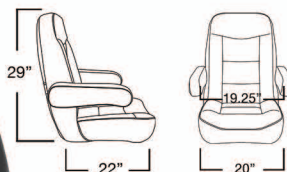


↻ - Armrest angle adjustment

Side Angle



HELMSMAN HELM



Seat Dimensions

IMAGE	PART NUMBER	DESCRIPTION	PACK QUANTITY
A.	1042110-B1	HELMSMAN RECLINING PILOT SEAT - BLACK	1 PACK

Helmsman Pilot seat offers a heavy-duty powder coated steel shock absorbing suspension seat frame. 6" thick foam cushions covered in marine grade vinyl.

- Back reclines 45 degrees
- Armrests flip up - out of the way
- Designed for 5" x 12" slide - no mounting plate required



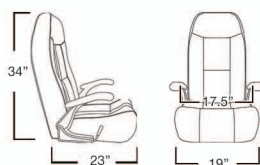
↻ - Armrest angle adjustment

Side Angle



NORWEGIAN HELM

Helm Seats



Seat Dimensions

A

IMAGE	PART NUMBER	DESCRIPTION	PACK QUANTITY
A.	1042064	NORWEGIAN HELM SEAT - WHITE	1 PACK
B.	1042066	NORWEGIAN HELM SEAT - BLACK	1 PACK
C.	1042093	NORWEGIAN HELM SEAT - BLACK / CHARCOAL	1 PACK

Luxury Helm seat provides maximum comfort for long rides. Plush foam padding covered with heavy-duty marine grade vinyl. Light weight aluminum frame.

- Back reclines 45 degrees
- Armrests flip-up - out of the way
- Weather resistant marine grade vinyl
- Universal mounting pattern: 5" x 12"

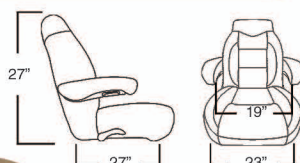


B



C

PONTOON RECLINE

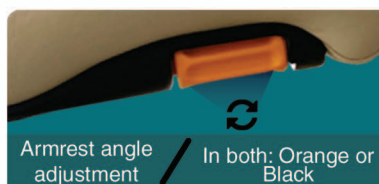


Seat Dimensions

IMAGE	PART NUMBER	DESCRIPTION	PACK QUANTITY
A.	1042185-1	PONTOON HELM RECLINE - CREAM	1 PACK

Pontoon Recline Seat offers a heavy-duty powder coated steel frame with suspension springs. 6" Foam cushions covered in marine grade vinyl.

- Back reclines 45 degrees
- Adjustable Armrests flip-up - out of the way
- Weather resistant marine grade vinyl
- Universal mounting pattern: 5" x 12"

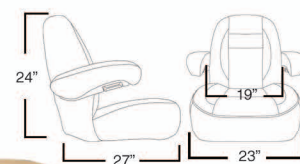


Armrest angle adjustment / In both: Orange or Black



Side Angle

PONTOON FIXED

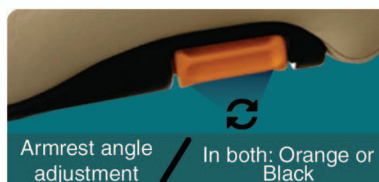


Seat Dimensions

IMAGE	PART NUMBER	DESCRIPTION	PACK QUANTITY
A.	1042180-1	PONTOON HELM FIXED - CREAM	1 PACK

Pontoon Fixed Seat offers a heavy-duty powder coated steel frame with suspension springs. 6" Foam cushions covered in marine grade vinyl.

- Adjustable Armrests flip-up - out of the way
- Weather resistant marine grade vinyl
- Universal mounting pattern: 5" x 12"



Armrest angle adjustment / In both: Orange or Black



Side Angle

Seating

NORWEGIAN PACKAGE



IMAGE	PART NUMBER	DESCRIPTION	PACK QUANTITY
A.	1002062	FIXED HEIGHT NORWEGIAN HELM PACKAGE - BLACK	1 PACK
B.	1002063	NORWEGIAN HELM PACKAGE, WK2 W/ MAINSTAY - BLACK	1 PACK
C.	1002093	FIXED HEIGHT NORWEGIAN HELM PACKAGE	1 PACK

Package Includes:

Norwegian helm seat, heavy-duty 4" Workhorse slide & swivel 24" fixed height brite dip pedestal with 12" round floor base, Helmsman flip-up footrest.



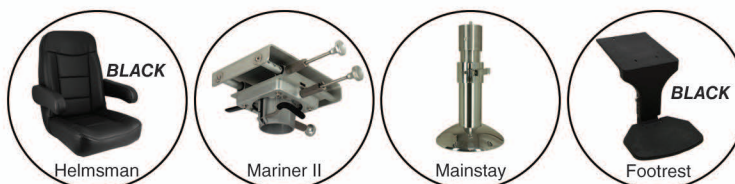
HELMSMAN PACKAGE



IMAGE	PART NUMBER	DESCRIPTION	PACK QUANTITY
A.	1002110	ADJUSTABLE HELMSMAN HELM PACKAGE	1 PACK

Package Includes:

Helmsman pilot helm seat, heavy-duty 4" air-ride Mariner II slide & swivel, 4" brite dip pedestal with 12" round floor base, adjusts from 18" to 28". Seat mounting footrest offers adjustable height and flips-up out of the way.



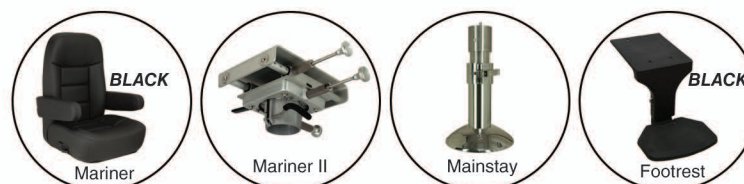
MARINER PACKAGE



IMAGE	PART NUMBER	DESCRIPTION	PACK QUANTITY
A.	1002083	ADJUSTABLE MARINER HELM PACKAGE	1 PACK

Package Includes:

Mariner helm seat, heavy-duty 4" air-ride Mariner II slide & swivel, 4" brite dip pedestal with 12" round floor base, adjusts from 18" to 28". Seat mounting footrest offers adjustable height and flips-up out of the way.



ABOUT *Passenger Vessel*

Passenger Vessel

Passenger Vessel Seating

The Passenger Vessel assortment has been developed in partnership with Modell Mobler Marine Seating, an international innovator in the field of marine furniture. With focus on leisure craft and passenger ferries, quality designs ensure that passengers enjoy a pleasant trip with a high degree of comfort.

From cabin seating and comfort seating, all the way to crew seating, Springfield Marine has it all! Including top of the line, easy to customize passenger accessories for all your seating applications.

Passenger & Commercial catalogs now available



Senja High (Double Seat)



Bahama Turn Up

Officially Licensed By



Bahama Diplomat Extended

Springfield Marine Company

is a proud member of these associations and subscribes to the standards and practices which they set forth.



About ABYC H-31 Classifications And Safety Standards

The American Boat and Yacht Council (ABYC) has recommended marine industry seating standards for pedestal applications into two separate categories as follows:

Class A Seat designed for occupancy while the boat is underway at any speed.

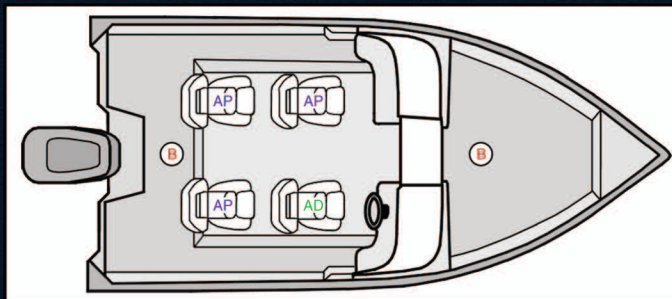
Class B Seat designed for occupancy only at boat speeds not exceeding five miles per hour (fishing or trolling).

All pedestals must pass a series of tests within each of these classifications which include horizontal and vertical impacts, torque, static load, fatigue, and fastener pull testing.

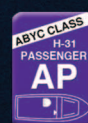
There are two types of class A seats:

Class AP - Passenger Seat mount must resist 30 foot pounds of torque (non-locking).

Class AD - Driver Seat mount must incorporate a "mechanical interference lock" and resist 150 foot pounds of torque (locking).



CLASS B



CLASS AP

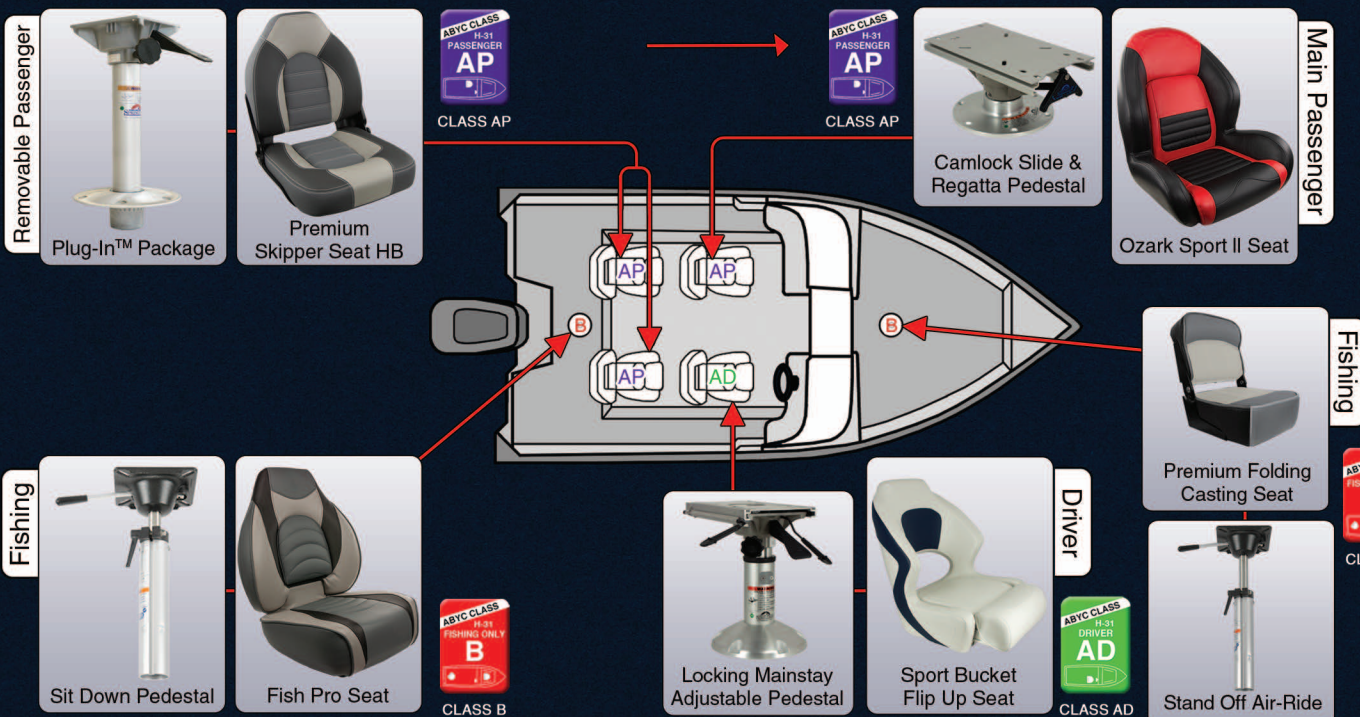


CLASS AD

Look for these labels to identify the ABYC H-31 Classifications

Springfield Marine Company has been a leader in establishing and complying with these ABYC recommended standards.

IN ORDER TO COMPLY WITH THESE STANDARDS, SPRINGFIELD COMPONENTS MUST BE COMBINED WITH OTHER SPRINGFIELD PARTS. MIXING SPRINGFIELD PARTS WITH NON-SPRINGFIELD COMPONENTS VOIDS THESE STANDARD CLASSIFICATIONS.



ABYC H-31

Example of multiple parts on typical model boat



SPRINGFIELD MARINE COMPANY

YOUR SEATING SOLUTION



Springfield Marine Company

Address:
1093 N. Cynthia Drive Suite 1
Nixa, Mo 65714

Email:
sales@springfieldgrp.com
Website:
www.springfieldgrp.com

Phone:
TEL: (417) 725-2667
FAX: (417) 724-9035